

# Restaurant Space for Lease



W4052 WI-11, Elkhorn WI 53121



## Property Highlights

- Former Burger King space available
- Located on the corner of Highway 11 & Interstate 43, excellent visibility & access
- Shared space with BP Lafayette Fuel Plaza along Highway 11
- FF&E included: Hood vents, coolers, sinks, booths
- Landlord maintains snow removal, lawn care, exterior building maintenance and 50/50 split for garbage waste

## Property Summary

Lease Rate	\$18.00/sf
Space Available	±2,600 sf
Lease Type	NN
NN Expenses	\$6.50 sf
Term	5 years
TI Allowance	Negotiable
Zoning	B-4 Highway Business

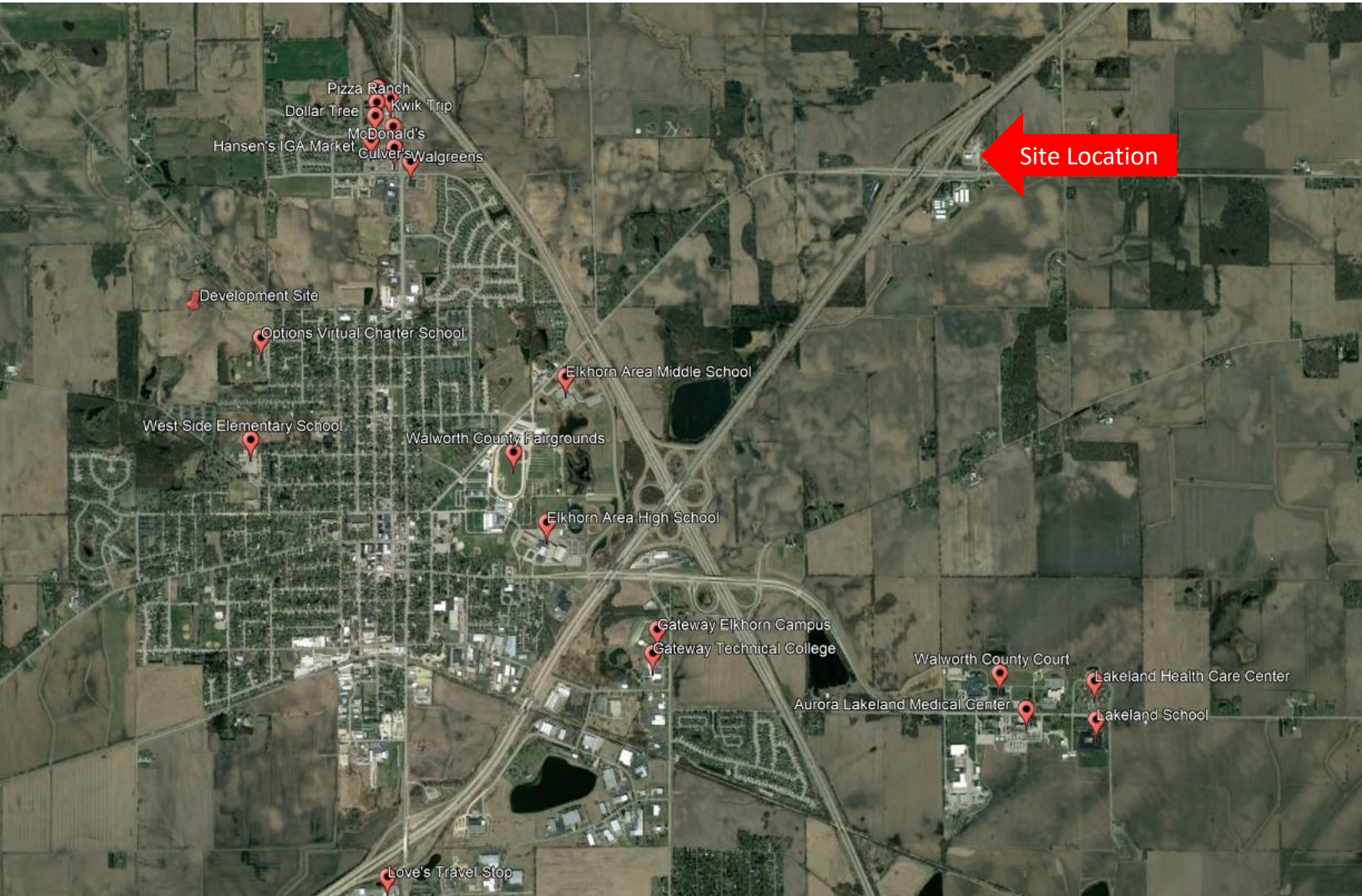
Ben Filkouski, CCIM  
608-333-7734

[Ben.Filkouski@madisoncommercialre.com](mailto:Ben.Filkouski@madisoncommercialre.com)

# Restaurant Space for Lease

## W4052 WI-11

Elkhorn WI 53121



## Demographics & Traffic Counts

	1 Mile	3 Mile	5 Mile
Population (2023)	64	8532	15626
Number of Households	24	3297	5874
Average HH Income	123295	83418	87744

Traffic Counts (2022)      21,375 Highway 11 at Plank Rd, AADT  
AADT-Annual Average Daily Traffic

Ben Filkouski, CCIM  
608-333-7734

[Ben.Filkouski@madisoncommercialre.com](mailto:Ben.Filkouski@madisoncommercialre.com)

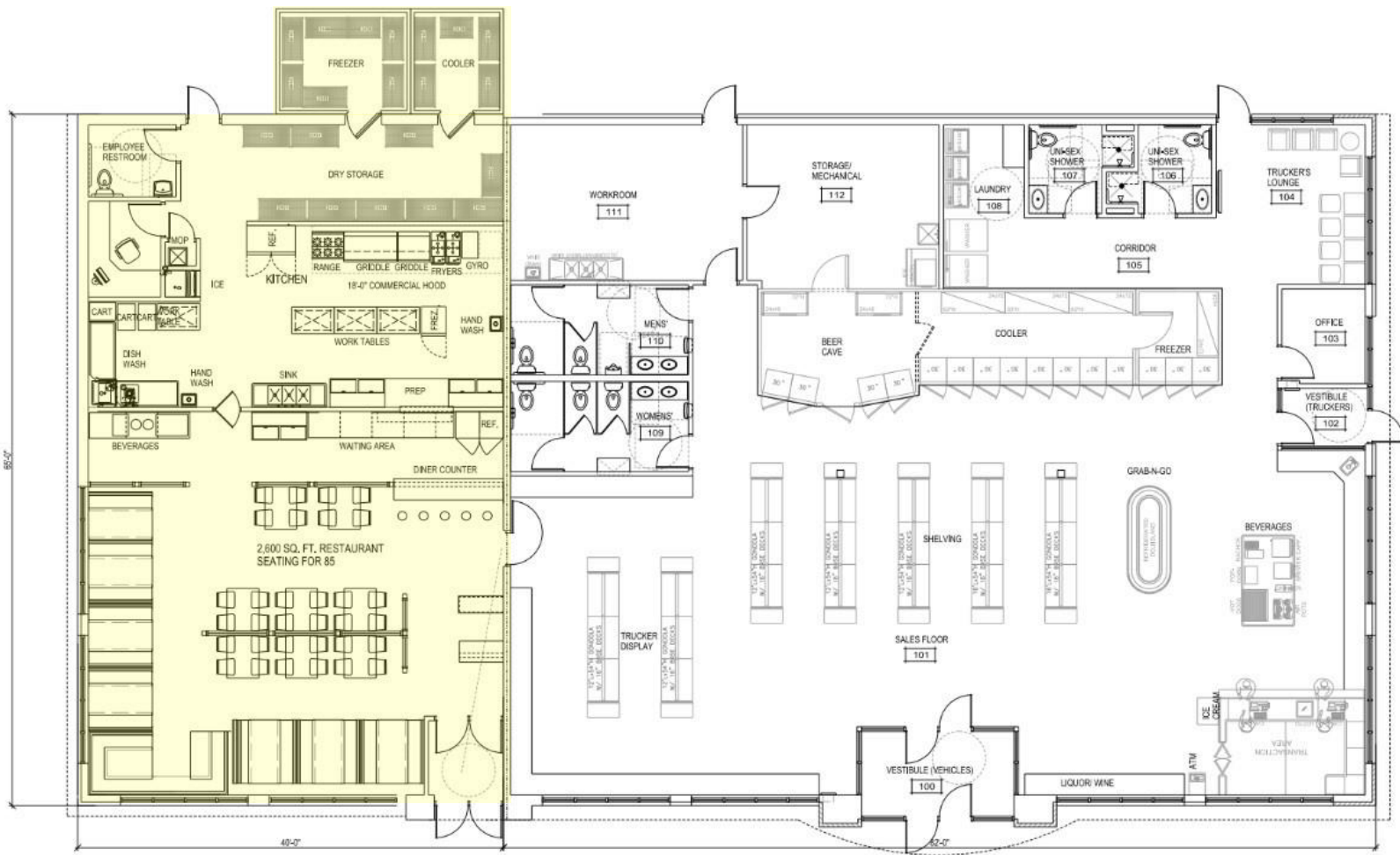
# Restaurant Space for Lease

## W4052 WI-11

Elkhorn WI 53121



### Floor Plan – Approximately 2,600 sf



**PRELIMINARY RESTAURANT LAYOUT**  
SCALE: 1"=10'-0"

Ben Filkouski, CCIM  
608-333-7734

[Ben.Filkouski@madisoncommercialre.com](mailto:Ben.Filkouski@madisoncommercialre.com)

# Restaurant Space for Lease

## W4052 WI-11

Elkhorn WI 53121



Ben Filkouski, CCIM  
608-333-7734

[Ben.Filkouski@madisoncommercialre.com](mailto:Ben.Filkouski@madisoncommercialre.com)

# Restaurant Space for Lease

W4052 WI-11

Elkhorn WI 53121



Ben Filkouski, CCIM  
608-333-7734

[Ben.Filkouski@madisoncommercialre.com](mailto:Ben.Filkouski@madisoncommercialre.com)

Madison Commercial Real Estate LLC, 5609 Medical Cr, Suite 202, Madison WI 53719

# Restaurant Space for Lease

## W4052 WI-11

Elkhorn WI 53121



Ben Filkouski, CCIM  
608-333-7734

[Ben.Filkouski@madisoncommercialre.com](mailto:Ben.Filkouski@madisoncommercialre.com)

Madison Commercial Real Estate LLC, 5609 Medical Cr, Suite 202, Madison WI 53719

**BROKER DISCLOSURE TO NON-RESIDENTIAL CUSTOMERS**

1 Prior to negotiating on your behalf the Broker must provide you the following disclosure statement:

2 **BROKER DISCLOSURE TO CUSTOMERS**

3 You are a customer of the broker. The broker is either an agent of another party in the transaction or a subagent of another broker  
4 who is the agent of another party in the transaction. The broker, or a salesperson acting on behalf of the broker, may provide  
5 brokerage services to you. Whenever the broker is providing brokerage services to you, the broker owes you, the customer, the  
6 following duties:

- 7 ■ The duty to provide brokerage services to you fairly and honestly.
- 8 ■ The duty to exercise reasonable skill and care in providing brokerage services to you.
- 9 ■ The duty to provide you with accurate information about market conditions with a reasonable time if you request it, unless  
10 disclosure of the information is prohibited by law.
- 11 ■ The duty to disclose to you in writing certain material adverse facts about a property, unless disclosure of the information is  
12 prohibited by law (**See Lines 47-55**).
- 13 ■ The duty to protect your confidentiality. Unless the law requires it, the broker will not disclose your confidential information or the  
14 confidential information of other parties (**See Lines 22-39**).
- 15 ■ The duty to safeguard trust funds and other property the broker holds.
- 16 ■ The duty, when negotiating, to present contract proposals in an objective and unbiased manner and disclose the advantages and  
17 disadvantages of the proposals.

18 Please review this information carefully. A broker or salesperson can answer your questions about brokerage services, but if you  
19 need legal advice, tax advice, or a professional home inspection, contact an attorney, tax advisor, or home inspector.  
20 This disclosure is required by section 452.135 of the Wisconsin statutes and is for information only. It is a plain-language summary of  
21 A broker's duties to a customer under section 452.133 (1) of the Wisconsin statutes.

22 **CONFIDENTIALITY NOTICE TO CUSTOMERS**

23 BROKER WILL KEEP CONFIDENTIAL ANY INFORMATION GIVEN TO BROKER IN CONFIDENCE, OR ANY INFORMATION  
24 OBTAINED BY BROKER THAT HE OR SHE KNOWS A REASONABLE PERSON WOULD WANT TO BE KEPT CONFIDENTIAL,  
25 UNLESS THE INFORMATION MUST BE DISCLOSED BY LAW OR YOU AUTHORIZE THE BROKER TO DISCLOSE PARTICULAR  
26 INFORMATION. A BROKER SHALL CONTINUE TO KEEP THE INFORMATION CONFIDENTIAL AFTER BROKER IS NO LONGER  
27 PROVIDING BROKERAGE SERVICES TO YOU.

28 THE FOLLOWING INFORMATION IS REQUIRED TO BE DISCLOSED BY LAW:

- 29 1. MATERIAL ADVERSE FACTS, AS DEFINED IN SECTION 452.01 (5g) OF THE WISCONSIN STATUTES (**SEE LINES 47-55**).
- 30 2. ANY FACTS KNOWN BY THE BROKER THAT CONTRADICT ANY INFORMATION INCLUDED IN A WRITTEN INSPECTION  
31 REPORT ON THE PROPERTY OR REAL ESTATE THAT IS THE SUBJECT OF THE TRANSACTION.

32 TO ENSURE THAT THE BROKER IS AWARE OF WHAT SPECIFIC INFORMATION YOU CONSIDER CONFIDENTIAL, YOU MAY LIST  
33 THAT INFORMATION BELOW (**SEE LINES 35-36**). AT A LATER TIME, YOU MAY ALSO PROVIDE THE BROKER WITH OTHER  
34 INFORMATION YOU CONSIDER TO BE CONFIDENTIAL.

35 **CONFIDENTIAL INFORMATION:** \_\_\_\_\_

36 \_\_\_\_\_

37 **NON-CONFIDENTIAL INFORMATION** (The following information may be disclosed by Broker): \_\_\_\_\_

38 \_\_\_\_\_

39 *(INSERT INFORMATION YOU AUTHORIZE THE BROKER TO DISCLOSE SUCH AS FINANCIAL QUALIFICATION INFORMATION.)*

40 **CONSENT TO TELEPHONE SOLICITATION**

41 I/We agree that the Broker and any affiliated settlement service providers (for example, a mortgage company or title company) may  
42 call our/my home or cell phone numbers regarding issues, goods and services related to the real estate transaction until I/we  
43 withdraw this consent in writing. **List Home/Cell Numbers:** \_\_\_\_\_

44 **SEX OFFENDER REGISTRY**

45 *Notice: You may obtain information about the sex offender registry and persons registered with the registry by contacting the*  
46 *Wisconsin Department of Corrections on the Internet at <http://offender.doc.state.wi.us/public/> or by phone at 608-240-5830.*

47 **DEFINITION OF MATERIAL ADVERSE FACTS**

48 A "material adverse fact" is defined in Wis. Stat. § 452.01 (5g) as an adverse fact that a party indicates is of such significance, or that  
49 is generally recognized by a competent licensee as being of such significance to a reasonable party, that it affects or would affect  
50 the party's decision to enter into a contract or agreement concerning a transaction or affects or would affect the party's decision  
51 about the terms of such a contract or agreement. An "adverse fact" is defined in Wis. Stat. § 452.01 (1e) as a condition or occurrence  
52 that a competent licensee generally recognizes will significantly and adversely affect the value of the property, significantly reduce  
53 the structural integrity of improvements to real estate, or present a significant health risk to occupants of the property; or information  
54 that indicates that a party to a transaction is not able to or does not intend to meet his or her obligations under a contract or  
55 agreement made concerning the transaction.