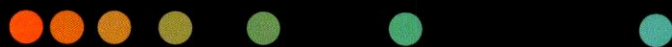


Deep Resolve

MRI – Faster than ever before

Clinical image gallery – MSK

siemens-healthineers.com/deepresolve



Knee with Deep Resolve from 3T with MAGNETOM Skyra¹



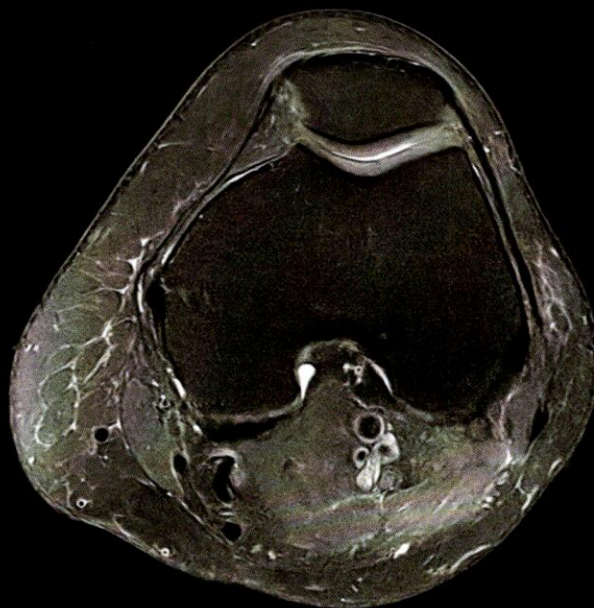
PD TSE FS, PAT 4, Deep Resolve, 0.2 x 0.2 x 3.0,
TA 1:00 mins



PD TSE, PAT 4, Deep Resolve, 0.2 x 0.2 x 3.0,
TA 1:10 mins



PD TSE FS, PAT 4, Deep Resolve, 0.2 x 0.2 x 3.0,
TA 0:41 mins



PD TSE FS, PAT 4, Deep Resolve, 0.2 x 0.2 x 3.0,
TA 1:02 mins

Study ID: 2a0aa2707

Shoulder with Deep Resolve from 3T with MAGNETOM Lumina



PD FS TSE, PAT 4, 0.2 x 0.2 x 3.0,
TA 2:24 mins



PD FS TSE, PAT 4, Deep Resolve, 0.2 x 0.2 x 3.0,
TA 1:26 mins

Study ID: 2aaaa2610, Images courtesy of ZEMODI Bremen Mitte, Germany

Ankle with Deep Resolve from 1.5T with MAGNETOM Altea



PD TSE, PAT 2,
Deep Resolve,
0.3 x 0.3 x 3.0,
TA 2:44 mins



PD TSE, PAT 4,
Deep Resolve,
0.1 x 0.1 x 3.0,
TA 2:31 mins

Study ID: 1aaaa4174, Images courtesy of ZEMODI Bremen Mitte, Germany

Wrist with Deep Resolve from MAGNETOM Viato.Mobile²



T1 TSE, PAT 4, 0.2 x 0.2 x 3.0,
TA 3:20 mins



T1 TSE, PAT 4, Deep Resolve, 0.2 x 0.2 x 3.0,
TA 0:48 mins

Study ID: 1aaaa4207

Knee with Deep Resolve from MAGNETOM Vida



PD FS TSE, PAT 3, SMS 2, 0.2 x 0.2 x 2.5,
TA 0:39 mins



PD FS TSE, PAT 3, SMS 2, Deep Resolve, 0.2 x 0.2 x 3.0,
TA 0:39 mins

Study ID: 2aaaa2399, Images courtesy of Diagnostik Zentrum, Graz, Austria

Elbow with Deep Resolve from MAGNETOM Vida



PD FS TSE, PAT 3,
Deep Resolve,
0.2 x 0.2 x 3.0,
TA 0:48 mins



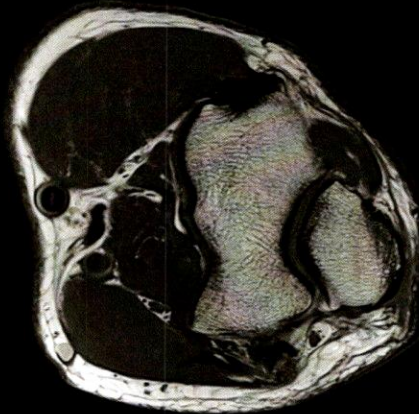
PD TSE, PAT 3,
Deep Resolve,
0.1 x 0.1 x 3.0,
TA 0:52 mins



PD TSE, PAT 3,
Deep Resolve,
0.1 x 0.1 x 3.0,
TA 1:12 mins



PD FS TSE, PAT 3,
Deep Resolve,
0.2 x 0.2 x 3.0,
TA 0:48 mins



PD TSE, PAT 2, SMS 2,
Deep Resolve,
0.1 x 0.1 x 3.0,
TA 0:56 mins

Study ID: 2aaaa2684, Images courtesy of Calvary, Adelaide, Australia

Hips with Deep Resolve from MAGNETOM Avanto^{fit} 3



T2 TSE, PAT 3, Deep Resolve,
0.3 x 0.3 x 2.5, TA 1:44 mins



T2 STIR, PAT 3, Deep Resolve,
0.6 x 0.6 x 2.5, TA 1:08 mins

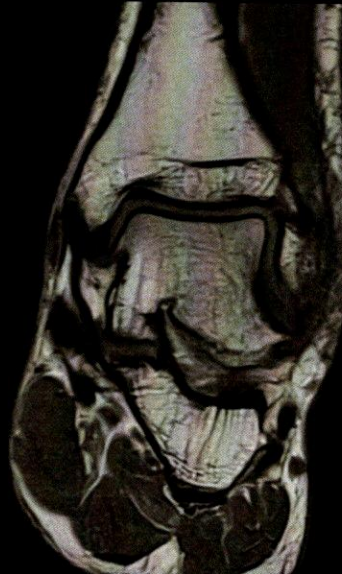


PD TSE, PAT 3, Deep Resolve,
0.4 x 0.4 x 2.5, TA 1:18 mins

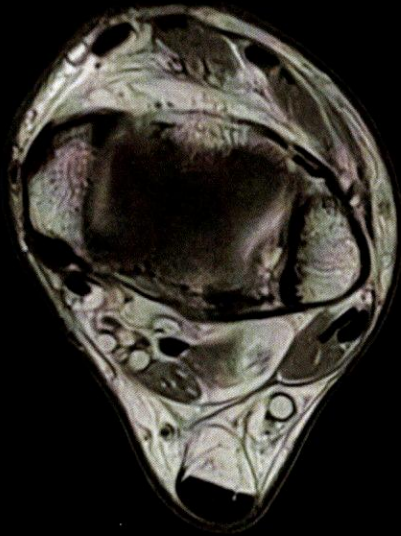
Ankle with Deep Resolve from MAGNETOM Free.Max



PD FS TSE, PAT 4, Deep Resolve, 0.3 x 0.3 x 3.0, TA 3:00 mins



T2 STIR TSE, PAT 4, Deep Resolve, 0.3 x 0.3 x 3.0, TA 2:47 mins



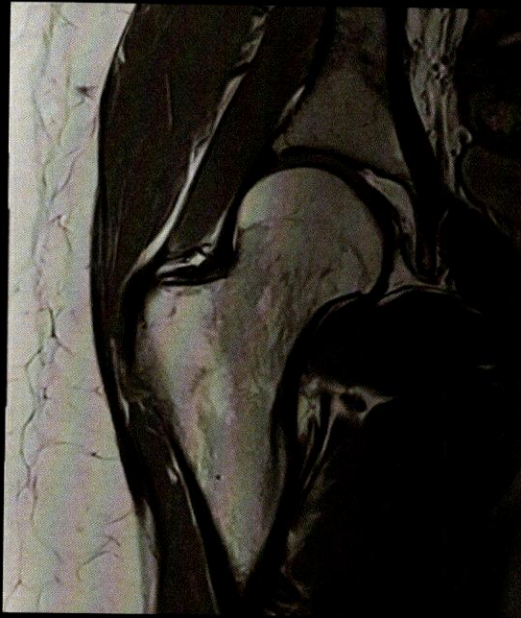
PD TSE, PAT 4, Deep Resolve, 0.3 x 0.3 x 3.0, TA 3:07 mins



T1 TSE, PAT 4, SMS 2, Deep Resolve, 0.3 x 0.3 x 3.0, TA 2:29 mins

Study ID: 7aaaa0481

Hip with Deep Resolve from MAGNETOM Amira



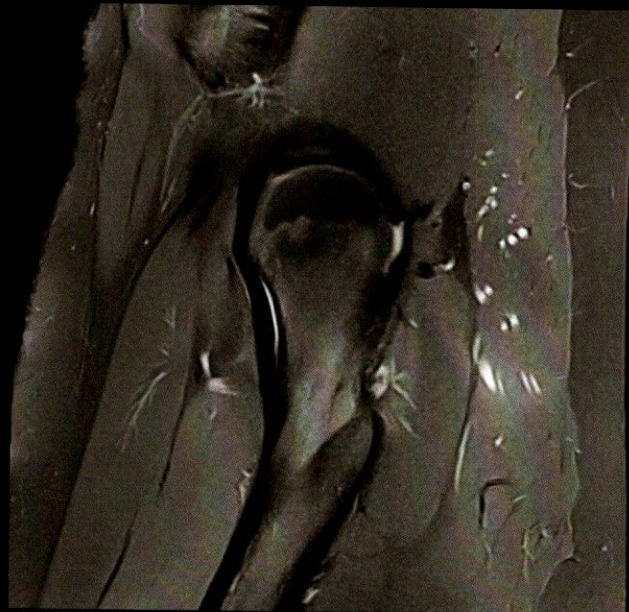
T1 TSE, PAT 3, Deep Resolve, 0.3 x 0.3 x 3.0,
TA 1:54 mins



PD FS TSE, PAT 3, Deep Resolve, 0.3 x 0.3 x 3.0,
TA 1:40 mins



PD FS TSE, PAT 3, Deep Resolve, 0.3 x 0.3 x 3.0,
TA 1:40 mins



PD FS TSE, PAT 3, Deep Resolve, 0.3 x 0.3 x 3.0,
TA 1:40 mins

Study ID: 1aaaa4322, Images courtesy of ZRN MVZ am JEK, Germany

Disclaimer

- ¹ Deep Resolve for MAGNETOM Skyra is 510(k) pending and is not commercially available in the U.S. Its future availability cannot be guaranteed.
- ² MAGNETOM Viato.Mobile is under development and not commercially available in all countries. Its future availability cannot be guaranteed.
- ³ Deep Resolve is currently under development for MAGNETOM Avanto^{fit} and is not commercially available in all countries. Its future availability cannot be guaranteed.

Siemens Healthineers Headquarters

Siemens Healthcare GmbH
Henkestr. 127
91052 Erlangen, Germany
Phone: +49 9131 84-0
siemens-healthineers.com