

URNS *of*
Distinction
Quality Urns at Affordable Prices
Since 1988



CATALOG FOR FAMILIES

Urns

2021

Engraving

It is an honor to serve you and your family. We hope to make your decision making process as easy as possible by offering urns, keepsakes, and memorial jewelry in many different styles and a variety of materials.

Keepsakes and Memorial Jewelry allow you to tangibly share the memory of your loved one with family members and friends. Our keepsakes and jewelry are designed to hold a small amount of ashes or possibly a lock of hair, flower petals from the memorial, or soil from the burial site.



Hand stamped medallions,
page 27

TABLE OF CONTENTS

Affordable & Unique.....	Pg 3
Wood.....	Pg 4
Metal.....	Pg 8
Cloisonné.....	Pg 17
Art Glass & Porcelain.....	Pg 17
Marble.....	Pg 18
Resin.....	Pg 19
Patriotic.....	Pg 20
Infant.....	Pg 21
Jewelry.....	Pg 21
Keepsakes at a glance.....	Pg 25
Engraving.....	Pg 26

Engraving Directly on an urn or keepsake

As you flip through the pages, **E** identifies the urns that can be engraved, not all urns can be engraved.

Add your own words to express your unique thoughts, here are a few ideas if needed.

- Forever in our Hearts
- In Loving Memory
- Always in our Hearts
- In God’s Hands
- Forever Loved
- Forever Remembered, Forever Missed
- Always Loving, Always Loved
- Loving Wife, Mother, Grandmother
- Beloved Husband, Father, Grandfather



Affordable & Unique

Wood with Metal Trim



#1700

Scatter or display urn, top opening secures with a latch, velvet interior, 260 cu. in., 7.75" x 4" x 13"

Liberty



Right side of urn

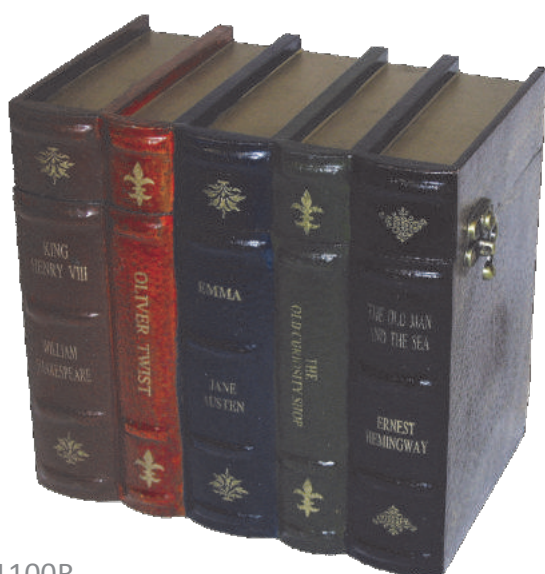


Add an engraved plate, see pg 27

#1800

Tasteful patriotic images wrap the urn, then 7 layers of lacquer are applied to create a smooth satin matte finish. Bottom entry, 270 cu. in., 10"W x 8"D x 5.75"H

Book Urn



#1100R

Discreet design for your bookcase, 2 latches on top, velvet interior, 250 cu. in., 9.5" x 6" x 8"

Jewelry Box Urn



#1200

Antiqued jewelry box urn, hand painted with roses, bottom entry, 230 cu. in., 11" x 8.25" x 7"

Simplicity

#1750 Warm walnut finish, crafted of MDF, bottom entry, full capacity 280 cu. in., 10.25"x 8.25"x 6"



Add Engraved Plate

See page 27



Add Appliqué

See page 5 for more options



Add Engraving Directly on Urn

See page 27



Add Military Medallion

See page 5



These options are available on other urns as well



Simple Personalization for Families

The Majestic

Includes

- Beautiful wood urn, deep mahogany finish, bottom entry, 300 cu. in., 9"L x 8.5"W x 11"H
- Heavy cast bronze appliqué of your choice
- Brass plate personalized with name and dates of loved one, 5"W x 2"H
- Please allow 2 - 4 days for personalization



1. Select your APPLIQUÉ



☐ Rose
#200-A1-M5



☐ Dove
#200-A2-M5



☐ Cross
#200-A3-M5



☐ Celtic Cross
#200-A4-M5



☐ Praying Hands
#200-A5-M5



☐ Masonic
#200-A6-M5



☐ Fisherman
#200-A7-M5



☐ Motorcycle
#200-A8-M5



☐ Tractor
#200-A9-M5



☐ Music
#200-A10-M5



☐ Eagle
#200-A11-M5



☐ US Air Force
#200-USAF-M5



☐ US Navy
#200-USN-M5



☐ USCG
#200-USCG-M5



☐ Great Seal
#200-USGS-M5



☐ US Army
#200-USA-M5



☐ US Marines
#200-USM-M5

2. Personalize with NAME and DATES

Name _____

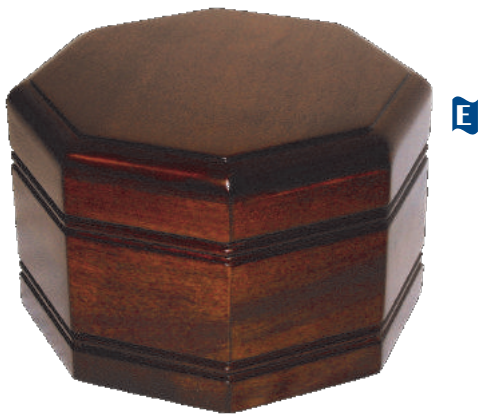
Date of Birth _____ Passing _____



#600 Light honey finish, cube urn will fit most niches, bottom entry, 235 cu. in., 7.25" x 7.25" x 7.25"



#610 Rich mahogany finish, cube urn will fit most niches, bottom entry, 235 cu. in., 7.25" x 7.25" x 7.25"



#925 Octagon urn with rich mahogany finish, bottom entry, 280 cu. in., 8.75" x 8.75" x 5.5"



#370 Curved urn with Rose design, bottom entry, 280 cu. in., 11.5" x 7.5" x 6.5"



#300 Curved design with rich mahogany finish, bottom entry, 290 cu. in., 11.75" x 7.5" x 6.5"



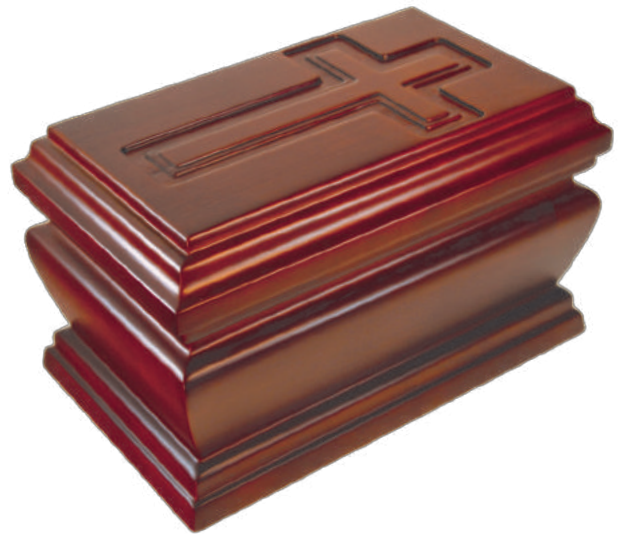
#500 Classic beautiful raised panel design, bottom entry, 225 cu. in., 11.5" x 7.5" x 6.25"



#540 Beautiful raised panel design made of solid oak with honey finish, bottom entry, 225 cu. in., 11.5" x 7.5" x 6"



#2350
Burl wood memory box with lustrous high gloss finish, top opening, locks with a key, velvet interior, 225 cu. in. when memento tray is removed, 135 cu. in. with tray, 11" x 7" x 6"



#530 Elegant cross urn, warm dark finish, bottom entry, 290 cu. in., 11.75" x 7" x 7"



Photo Urns

Made of MDF,
sliding panel on bottom
for secure closure,
photo area is 4.25"W x 5.25"H,
200 cu. in.,
9"x 6"x 6.25"

#TCMPK-200 Black



#TCMPC-200 Cherry

Radiance Candle Urns

After the memorial service the family can remove the glass with candle and take it home as a remembrance.
Bottom entry, 260 cu. in., 14.5"H x 8"W x 8"D. Includes white candle & decorative stones

#2400 Warm mahogany finish



#2410 White



Metal Urns

Red Empire



#3900

Solid aluminum,
includes wood stand,
threaded lid for a
secure seal, 220 cu. in.,
10"H x 9"W

#3900/3"

Velvet box included,
threaded lid for a secure seal,
3 cu. in.

Blue Empire



#3950

Solid aluminum,
includes wood stand,
threaded lid for a
secure seal, 220 cu. in.,
10"H x 9"W

#3950/3"

Velvet box included,
threaded lid for a secure seal,
3 cu. in.,

Royal Midnight Blue



E

#4100
Crafted of brass
and aluminum,
threaded lid for
a secure seal,
200 cu. in.,
9.5"H x 8"W



#4100/3"

Velvet box included,
threaded lid for a secure seal,
6 cu. in., 3.4"H x 2.75"W

Shown with optional Hand stamped medallion, see pg. 27

Royal Pearl



E

#4000
Crafted of brass
and aluminum,
threaded lid for
a secure seal,
200 cu. in.,
9.5"H x 8"W



#4000/3"

Velvet box included,
threaded lid for a secure seal,
6 cu. in., 3.4"H x 2.75"W

Royal Purple



E

#4200
Crafted of brass
and aluminum,
threaded lid for
a secure seal,
200 cu. in.,
9.5"H x 8"W



#4200/3"

Velvet box included,
threaded lid for a secure seal,
6 cu. in., 3.4"H x 2.75"W

Lavender Fire



E

#3600
Solid aluminum,
threaded lid for
a secure seal,
200 cu. in.,
10.75"H x 6"W



#3600/3"

Velvet box included,
threaded lid for a secure seal,
3 cu. in.

Hammered Aluminum



#3750
Solid aluminum,
threaded lid for
a secure seal,
200 cu. in.,
11"H x 7"W



#3750/3"
Velvet box included,
threaded lid for a secure seal,
3 cu. in.

Hammered Copper



#3700
Copper plated
over aluminum,
threaded lid for
a secure seal,
200 cu. in.,
11"H x 7"W



#3700/3"
Velvet box included,
threaded lid for a secure seal,
3 cu. in.

Rustic Matte



#2500
Solid aluminum,
threaded lid for
a secure seal,
200 cu. in.,
10.5"H x 6"W



#2500/3"
Velvet box included,
threaded lid for a secure seal,
3 cu. in.

Falling Leaves



#2700
Solid brass,
threaded lid for
a secure seal,
200 cu. in.,
9.8"H x 6.5"W



#2700/3"
Velvet box included,
threaded lid for a secure seal,
3 cu. in.

Blue Fire



E #2900
Solid aluminum,
threaded lid for
a secure seal,
200 cu. in.,
10.5"H x 6"W



#2900/3"
Velvet box included,
threaded lid for a secure seal,
3 cu. in.

Revere Pewter



#3400
Solid brass with
brushed pewter
finish, threaded
lid for a secure seal,
200 cu. in.,
10.8"H x 6.5"W



#3400/3"
Velvet box included,
threaded lid for a secure seal, 3 cu. in.

Shown with optional Hand stamped medallion, see pg. 27

Elegant White



E #3300
Solid brass,
threaded lid for
a secure seal,
200 cu. in.,
10"H x 6.5"W



#3300/3"
Velvet box included,
threaded lid for a secure seal,
3 cu. in.

Mossy Oak® Camo



#T2717L
Solid aluminum,
threaded lid for
a secure seal,
195 cu. in.,
10.4"H x 6.1"W



#T2717K
Velvet bag included,
threaded lid for a secure seal,
3 cu. in., 2.7"H x 1.6"W

Ascending



E #T5242L
Solid brass,
threaded lid for
a secure seal,
200 cu. in.,
10"H x 6.6"W



#T5242K
Velvet bag included,
threaded lid for a secure seal,
5 cu. in., 2.9"H x 1.9"W



#T5242H
Velvet case included,
3 cu. in., 2.9"H x 2.7"W

#TZ5271 Heart stand,
pewter finish

Tree of Life



#T5240L
Solid brass,
threaded lid for
a secure seal,
200 cu. in.,
10"H x 6.6"W



#T5240K
Velvet bag included,
threaded lid for a secure seal,
5 cu. in., 2.9"H x 1.9"W



#T5240H
Velvet case included,
3 cu. in., 2.9"H x 2.7"W

#TZ5270 Heart stand,
bronze finish

Butterfly



E #T5245L
Solid brass,
threaded lid for
a secure seal,
200 cu. in.,
10"H x 6.6"W



#T5245K
Velvet bag included,
threaded lid for a secure seal,
5 cu. in., 2.9"H x 1.9"W



#T5245H
Velvet case included,
3 cu. in., 2.9"H x 2.7"W

Rose



#T5243L
Solid brass,
threaded lid for
a secure seal,
200 cu. in.,
10"H x 6.6"W



#T5243K
Velvet bag included,
threaded lid for a secure seal,
5 cu. in., 2.9"H x 1.9"W



#T5243H
Velvet case included,
3 cu. in., 2.9"H x 2.7"W

Artisan Pearl



#T4612L
Crafted of alloy
and brass,
threaded lid for
secure seal,
200 cu. in.,
11"H x 7.25"W



#T4612K

Velvet bag included,
threaded lid for a secure seal,
5 cu. in., 3"H x 1.7"W



#T4612H

Velvet case included,
3 cu. in., 2.9"H x 2.7"W

#TZ5270 Heart stand,
bronze finish

Artisan Indigo



#T4610L
Crafted of alloy
and brass,
threaded lid for
a secure seal,
200 cu. in.,
11"H x 7.25"W



#T4610K

Velvet bag included,
threaded lid for a secure seal,
5 cu. in., 3"H x 1.7"W



#T4610H

Velvet case included,
3 cu. in., 2.9"H x 2.7"W

#TZ5271 Heart Stand,
pewter finish

Classic Bronze



#T2801L
Solid brass,
threaded lid for
a secure seal,
190 cu. in.,
10.4"H x 6.1"W



#T2801K

Velvet bag included,
threaded lid for a secure seal,
5 cu. in., 2.8"H x 1.7"W



#T2801H

Velvet case included,
3 cu. in., 2.9"H x 2.7"W

Classic Pewter



#T2802L
Solid brass,
threaded lid for
a secure seal,
190 cu. in.,
10.4"H x 6.1"W



#T2802K

Velvet bag included,
threaded lid for a secure seal,
5 cu. in., 2.8"H x 1.7"W



#T2802H

Velvet case included,
3 cu. in., 2.9"H x 2.7"W



CAN ENGRAVE ON URN SURFACE

Onyx



E #T5595L
Solid brass,
threaded lid for
a secure seal,
200 cu. in.,
8.9"H x 7"W

#T5595K
Velvet bag included,
threaded lid for a secure seal,
5 cu. in., 3"H x 1.9"W

#T2801H
Velvet case included,
3 cu. in., 2.9"H x 2.7"W

#TZ5270 Heart stand,
bronze finish

Celtic Cross



#T2815L
Solid brass,
threaded lid for
a secure seal,
200 cu. in.,
8.9"H x 7"W

#T2815K
Velvet bag included,
threaded lid for a secure seal,
5 cu. in., 3"H x 1.9"W

#T2815H
Velvet case included,
3 cu. in., 2.9"H x 2.7"W

#TZ5271 Heart stand,
pewter finish

Grecian Crimson



E #T502L
Solid brass,
threaded lid for
a secure seal,
200 cu. in.,
10.6"H x 6.6"W

#T502K
Velvet bag included,
threaded lid for a secure seal,
5 cu. in., 2.9"H x 1.8"W

#T502H
Velvet case included,
3 cu. in., 2.9"H x 2.7"W

Grecian Rustic Pewter



#T504L
Solid brass,
threaded lid
for a secure seal,
200 cu. in.,
10.6"H x 6.6"W

#T504K
Velvet bag included,
threaded lid for a secure seal,
5 cu. in., 2.9"H x 1.8"W

#T2802H
Velvet case included,
3 cu. in., 2.9"H x 2.7"W

Satori Ocean



#T5260L
Solid brass,
threaded lid for
a secure seal,
195 cu. in.,
8.8"H x 7.5"W



#T5260K
Velvet bag included,
threaded lid for a
secure seal, 5 cu. in.,
2.6"H x 2"W

#T5260H
Velvet case included,
3 cu. in.,
2.7"H x 2.9"W

Satori Pearl Pink



#T5262L
Solid brass,
threaded lid for
a secure seal,
195 cu. in.,
8.8"H x 7.5"W



#T5262K
Velvet bag included,
threaded lid for a
secure seal, 5 cu. in.,
2.6"H x 2"W

#T5262H
Velvet case included,
3 cu. in.,
2.7"H x 2.9"W

#TZ5271 Heart stand, pewter finish

Rose



#106
Solid brass,
velvet case included,
threaded lid for a
secure seal,
felt bottom,
225 cu. in.,
11.75"H

#106/3"
Heart shaped velvet case included,
threaded lid for a secure seal,
3 cu. in.

Angel



#711/10"
Solid brass, velvet case included,
threaded lid for a secure seal,
215 cu. in., 10.5"H



CAN ENGRAVE ON URN SURFACE

Silver Gold

Solid brass, velvet case included, threaded lid for a secure seal, felt bottom

#509/10"	200 cu. in.
#509/7"	85 cu. in.
#509/6"	43 cu. in.
#509/3"	3 cu. in.



Teardrop in Silver Gold

#840/10" Solid brass, velvet case included, bottom entry, 190 cu. in.

#840U 2 lines of personalization included on matching outer case (5"x 5"). Keepsake holds 3 cu. in.



840/3"
Velvet bag included,
bottom entry,
3 cu. in.

Available in 4 other finishes

Dynasty

#307/10" Solid brass, velvet case included, threaded lid for a secure seal, felt bottom, 225 cu. in.



#307/3"
Heart shaped velvet case included,
threaded lid for a secure seal, 3 cu. in.

Cloisonné Beautifully handcrafted from copper and enamel, then gilded in gold

Butterfly



#TC160L
Threaded lid for
a secure seal,
200 cu. in.,
10.7"H x 7.2"W



#TC160K
Velvet bag included, 5 cu. in.,
3.5"H x 2"W



#TC160H
Velvet case included,
3 cu. in., 3"H x 2.5" W

#TZ5270 Heart stand, bronze finish

Rose



#TC163L
Threaded lid for
a secure seal,
200 cu. in.,
10.7"H x 7.2"W



#TC163K
Velvet bag included, 5 cu. in.,
3.5"H x 2"W



#TC201H
Velvet case included,
3 cu. in., 3"H x 2.5" W

Art Glass & Porcelain

Hand Cut Art Glass



#7000
Black hand cut art glass,
lid and base in a silver tone
finish, threaded lid for a
secure seal, velvet case,
200 cu. in., 10.5"H



#7000/3"
Heart shaped velvet case, threaded lid
for a secure seal, 3 cu. in.

Lenox®



A collectible
in American homes
since 1889



#845/3"
3 cu. in.

#845
This Classic Lenox® urn features a unique and artistic scroll
pattern made of fine China with a 24-karat gold ring,
205 cu. in., 10.2" H x 7.25" W



#GT2

Beautiful mosaic marble with multicolored natural stone, no two are the same, bottom load, felt bottom, 220 cu. in., 11"H

#GT1

Heart shaped velvet case included, 3 cu. in., 3"H



Teakwood

#1410 Flat Top

Please specify Teakwood, Rosemary, Dark Orchid, or Seashell, 210 cu. in., 11"H x 8"W



#1420 Knob Top

Please specify Teakwood, Rosemary, Dark Orchid, or Seashell, 210 cu. in., 11"H x 8"W



Rosemary



#1430 Cube

Please specify Rosemary, Dark Orchid, or Seashell, 275 cu. in., 8.5" x 8.5" x 8.5"



Dark Orchid



Resin Urns

Eagle at Rest



#876/10 Bottom loading, felt bottom,
209 cu. in., 12"H x 9"W x 10"D

#876/3 Bottom loading, 12 cu. in., 5"H x 5"W
Shown with optional urn medallion, see pg. 27

Angel in Mourning



#896/10 Bottom loading, felt bottom,
215 cu. in., 11"H x 11"W x 8.5"D
Shown with optional urn medallion, see pg. 27

#896/3 Bottom loading, 20 cu. in., 5"H x 5"W
Shown with optional urn medallion, see pg. 27

Waterlily Dragonflies



#TC323L
200 cu. in., 9.4"H x 7.7"W x 7.7"D

Magnolia Lovebirds



#TC322L
200 cu. in., 9.4"H x 7.7"W x 7.7"D

Patriotic



#T2822K

No flag, velvet bag included, threaded lid for a secure seal, 5 cu. in., 2.6"H x 1.75"W

#T2822H

No flag, velvet case included, 3 cu. in., 2.9"H x 2.7"W



#T2823L

Stainless steel, threaded lid for a secure seal, 210 cu. in., 10.4"H x 6.1"W

#T2823K

Velvet bag included, threaded lid for a secure seal, 5 cu. in., 2.6"H x 1.75"W

#T2823H

Velvet case included, 3 cu. in., 2.9"H x 2.7"W

Americana



#718/10"

Hand painted on brass, velvet case included, threaded lid for a secure seal, felt bottom, 200 cu. in.

#718/3"

Heart shaped velvet case included, threaded lid for a secure seal, 3 cu. in.

Liberty



Right side of urn



Top of urn

#1800

Tasteful patriotic images wrap the urn, then 7 layers of lacquer are applied to create a smooth satin matte finish. Bottom entry, full capacity 270 cu. in., 10"W x 8"D x 5.75"H

Infant Urns

Angel Urn



#727 Delicately carved angel resting on cream marble, includes medallion and 2 lines of personalization, 17 cu. in., 5.5" x 3" x 5"



Top View

Arielle Hearts

Brass, Pearl finish, 20 cu. in., 4.5"H x 4.25"W



#T2791H



#T2790H



#TCMACHS
MDF Heart stand

Teddy Bear

Crafted of MDF, sliding panel at bottom for secure closure, 20 cu. in., 3.4" x 3.4" x 3.4"



#TMC5501



#TMC5500



Memorial Jewelry

Eternity Hearts

The Eternity Heart features a unique modern design with the off-centered heart. A matching 21" Rolo chain is included. The threaded cremated remains compartment is located on the back. Dimensions are .9"H x .9"W x .2"D, nominal capacity.

Eternity Hearts can be engraved, one line, 12 character limit, Raleway font only



#TJ5140
14k gold plated



#TJ5141
Stainless steel



#TJ5142
Slate



ITEM CAN BE ENGRAVED



Pillar

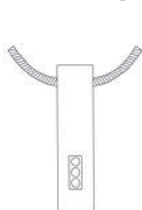
The Pillar collection features 3 cubic zirconias that provide just the right softness to the Pillar design. A matching 19" chain is included. The cremated remains compartment is threaded at the bottom. Dimensions are 1.3"H x .25"D, nominal capacity.

E Pillars can be engraved, one line, 15 character limit, engraving will be on back, Raleway font only, both uppercase and lowercase font available, please specify.

Bale Design



No-Bale Design



The Pillar will change to a no-bale design as inventory becomes available.



#TJ5090
14K gold plated



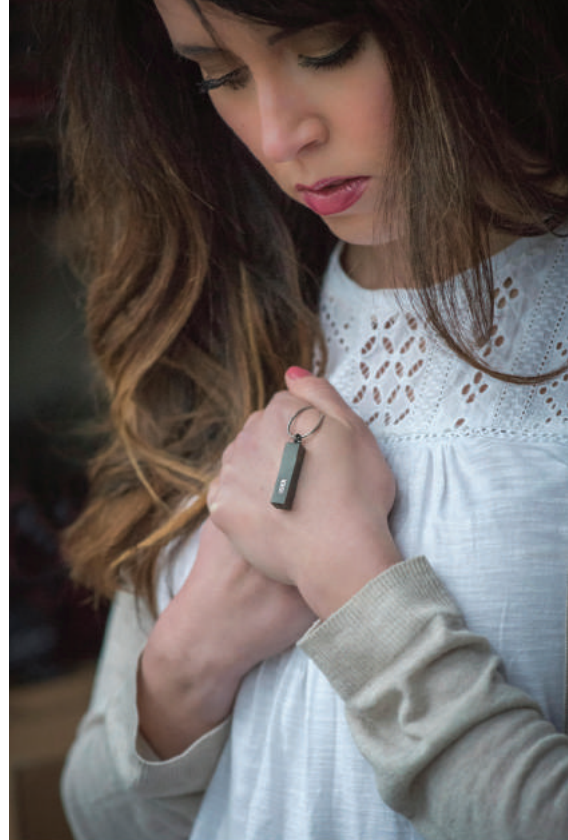
#TJ5091
Stainless steel



#TJ5092
Rose gold plated



#TJ5093
Onyx



Infinity Cross

The Infinity Cross features a cubic zirconia on the front. A matching 19" chain is included. The threaded cremated remains compartment is located on the back. Dimensions are 1.45"H x .80"W x .28"D, nominal capacity. The Infinity Cross is not suitable for engraving.



#TJ5131
Stainless steel



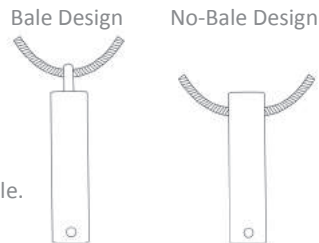
#TJ5130
14K gold plated



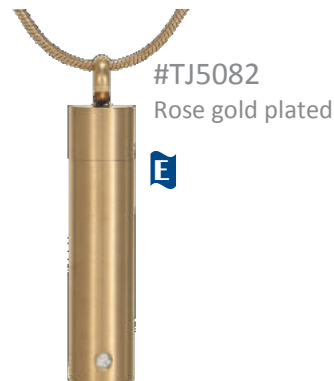
Cylinder

The Cylinder collection features one cubic zirconia for a subtle touch of elegance. A matching 19" chain is included. The cremated remains compartment is enclosed at the top with a threaded lid. Dimensions are 1.3"H x .3"D, nominal capacity.

E The Cylinder can be engraved, one line, 15 character limit, engraving will be on back, Raleway font only.



The Cylinder will change to a no-bale design as inventory becomes available.



Hourglass

The Hourglass pendants feature two rows of cubic zirconias that circle the entire piece. A matching 19" chain is included. The cremated remains compartment is threaded at the bottom. Dimensions are 0.81"H x 0.4"D, nominal capacity.

The Hourglass will change to a no-bale design as inventory becomes available.



The Hourglass collection is not suitable for engraving.



Cross

The Cross pendants feature a textured design. A matching 24" Rolo chain is included. The cremated remains compartment is threaded and located on the back. Dimensions are 1.8"H x 1.1"W x .18"D, nominal capacity.

E The Cross can be engraved, one line, 15 character limit, engraving will be on back, Raleway font only.



#TJ5120
Stainless steel



#TJ5121
Slate

Tag

Tag pendants feature texture accents that create a subtle but elegant look. A matching 24" Rolo chain is included. The cremated remains compartment is threaded and located on the back. Dimensions are 1.96"H x .98"W x .16"D, nominal capacity.

E The Tag can be engraved, up to 4 lines, 15 character limit per line, engraving will be on back, Raleway font only.



#TJ5126
Onyx



#TJ5125
Stainless steel



Cable Link Bracelet

The Cable Link Bracelet closely resembles a watch band and is adjustable to fit most wrists. The cremated remains compartment is located on the back of the main centerpiece of the bracelet and is threaded for a secure seal. Dimensions are 9" length x .68"W x .18"D, nominal capacity. This collection is not suitable for engraving.



#TJ5200
Stainless steel



#TJ5201
Onyx



Metal Keepsakes at a Glance Found throughout catalog





ENGRAVING ORDER FORM

- Please allow an additional 3-5 business days for engraving orders
- Yes, we can do custom requests, there may be an additional charge

This Engraving Order is for: _____

Item to be Engraved:

Quantity _____ item # _____ Description _____

Personalization: Please print clearly. Text will be engraved exactly as entered, preserving all capitalization and punctuation. Double check spelling.

Select your Font: Select your font for certain items only. Jewelry, Elegante Medallions, and Hand Stamped Medallions do not have a choice of font.

☐ #1:Eames - John R. Smith ☐ #2:*Lucida* - John R. Smith ☐ #3:Arial - John R. Smith

Engraving Directly on Urn Surface Only:

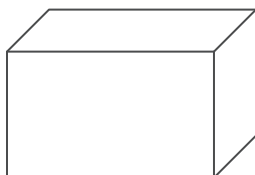
Select your Optional Symbol:

☐ Yes (Please circle choice)

☐ No symbol



Engraving Directly on Urn Surface Only: Use drawings below to show general layout of engraving, top versus side, symbol placement with regard to text (above, below, to the side).




Special Notes/Requests:



Cut Here to FAX

Personalization

NAME	ORDER #	DESCRIPTION	ENGRAVING DETAILS
Engraving Directly on Urn     		Engraving on full size urns, keepsakes, and heart keepsakes. Not all urns can be engraved, see if urn is marked with 	3 font choices available: Eames - Martina Sara Hernandez <i>Lucida</i> - Gabriel F. Bianchi Arial - Margaret Rose Carter Full Size urn: 3 lines max of text 1 artwork (See pg 26) Keepsake: 2 lines - 20 character limit per line Heart Keepsake: 3 lines - 15 character limit per line on most For hearts with décor, 2 lines
Engraved Plate 	Order #M5	Brass Plate with engraving, 5" W x 2"H	3 font choices available: Eames - Martina Sara Hernandez <i>Lucida</i> - Gabriel F. Bianchi Arial - Margaret Rose Carter 3 lines max of text
Elegante Curved Medallion     	Bright Brass Order #33 Bright Silver Order #43 Brushed Brass Order #34 Burnt Bronze Order #54	Medallion comes with an adjustable chain and double sided tape so family can choose whether to hang or attach to the urn.	Arial font only 2 lines - 27 character limit per line
Elegante Flat Medallion   	Brushed Brass Order #38 Brushed Pewter Order #48	Medallion attaches to flat surface with double sided tape which is included.	Arial font only 2 lines - 30 character limit per line
Hand Stamped Medallion - Large   	Brass Order #DPL Aluminum Order #APL	Hand stamped medallion with Swarovski crystal birthstone and adjustable ball chain.	2 lines - 17 character limit per line Mention birth month for crystal birthstone
Hand Stamped Medallion - Keepsake   	Brass Order #DPK Aluminum Order #APK	Hand stamped medallion with Swarovski crystal birthstone and adjustable ball chain.	2 lines - 7 character limit Mention birth month for crystal birthstone

URNS *of* Distinction

